

F-105 "Thud" Park Jet

1/13th Scale

Designed by: Ben Song

Wing Span: 31 7/8in

Length: 59 1/2in

Wing Area: 225sqin

AUW: 24-32oz

Wing Loading: 15-20oz/sqft

C of G: 7" aft of where the intake touches fuse (or 5-1/8" forward of TE along root)

Servos: 2-3 (elevator x1, ailerons x1 or 2)

Motor:

Battery: 2100 3s1p lipo

Max Amps: A

Control Throws:

Aileron: 3/4" up & down (-40% expo) high rates, 1/2" up & down low rates

Elevator: 3/8" up & down (-40% expo) high rates, 3/8" up & down low rates

Made from FFF or 6mm Depron unless otherwise specified.

If you enjoy these plans, please consider a \$10 Paypal donation to benjsong@hotmail.com if you would like to see more designs.

4/5/09 v2.2 Copyright 2009 All Rights Reserved

F-105 "Thud" Park Jet

1/13th Scale

Designed by Dale Snow
 Who's Who: 2178h
 Length: 59.02in
 Wingspan: 27.25in
 Wing Area: 272.25sqin
 Motor: 2100 3/8 Hiko
 Motor Mount: A

Copyright © 2009 All Rights Reserved

This sheet contains the following parts:

- Top Bulkhead 6 (Note 1)
- Bottom Bulkhead 5 (Note 1)
- Top Bulkhead 3 (Note 1)
- Top Support (Note 1)
- Bottom Support (Note 1)
- Turbojetic A (Note 1)
- Bottom Bulkhead 7 (Note 1)
- Top Bulkhead 8 (Note 1)
- Bottom Bulkhead 8 (Note 1)
- Bottom Bulkhead 4 (Note 1)
- Motor Mount (Note 1)
- Motor Mount 1/2" (Note 1)
- Motor Mount 1/4" (Note 1)
- Motor Mount 1/8" (Note 1)
- Motor Mount 1/16" (Note 1)

This sheet contains the following parts:

- Bottom Sun Between Bulkhead 6 & 8 (Note 1)
- Tail Piece (Note 1)

This sheet contains the following parts:

- Bottom Sun Between Bulkhead 5 & 6 (Note 1)

This sheet contains the following parts:

- Top Bulkhead 4 Doubler (Note 1)
- Top Sun Between Bulkhead 2 & 3 (Note 1)

This sheet contains the following parts:

- Top Sun Between Bulkhead 4 & 5 (Note 1)
- Bottom Sun Between Bulkhead 2 & 3 (Note 1)

This sheet contains the following parts:

- Top Bulkhead 1 (Note 1)
- Top Scoop (Note 2)
- Center Wing Support (Note 2)
- Top Bulkhead 1 (Note 1)

This sheet contains the following parts:

- Top Sun Between Bulkhead 7 & 8 (Note 2)
- Top Bulkhead 2 (Note 1)
- Motor Cone (Note 1)
- Motor Cone (Note 1)
- Bottom Bulkhead 6 (Note 1)
- Bottom Bulkhead 3 (Note 1)

This sheet contains the following parts:

- Dorsal Fin (Note 1)
- Turbojetic Sun Between Bulkhead A & B (Note 1)
- Air Scoop (Note 1)
- Air Scoop (Note 1)

This sheet contains the following parts:

- Top Bulkhead 5 Doubler (Note 1)
- Stabilizer Support 1 (Note 2)
- Stabilizer Support 2 (Note 2)
- Top Bulkhead 5 Doubler (Note 1)
- Air Scoop Base (Note 2)

This sheet contains the following parts:

- Top Bulkhead 4 (Note 1)
- Top Bulkhead 4 (Note 1)
- Top Bulkhead 4 (Note 1)
- Top Bulkhead 4 (Note 1)

This sheet contains the following parts:

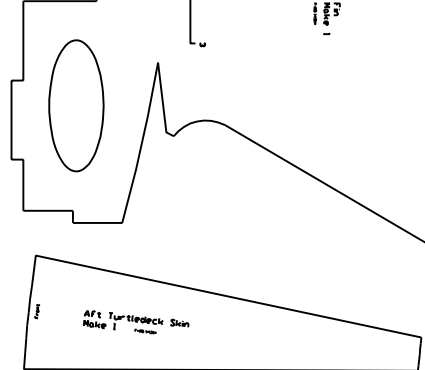
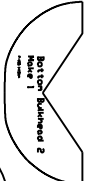
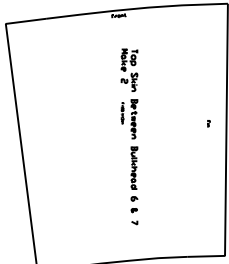
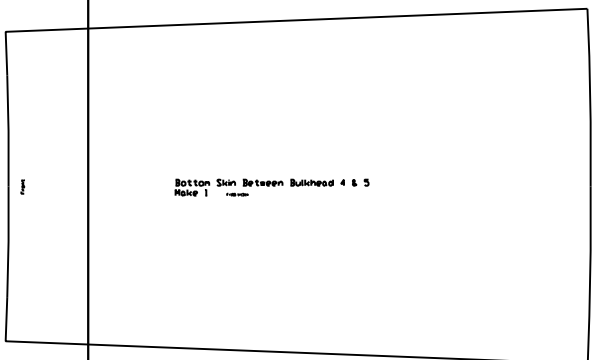
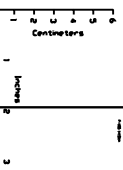
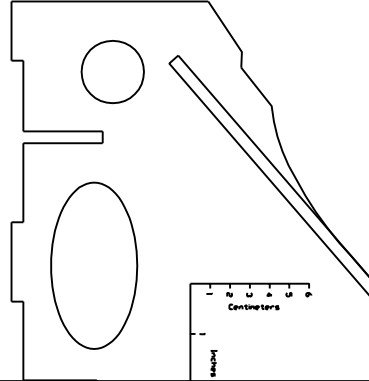
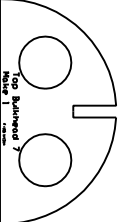
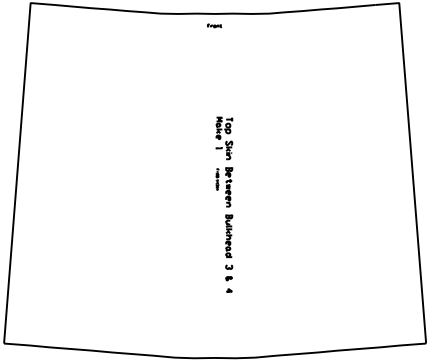
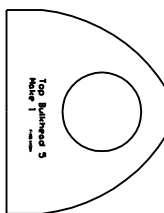
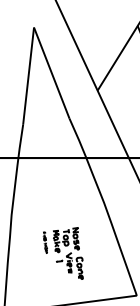
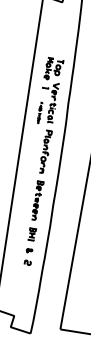
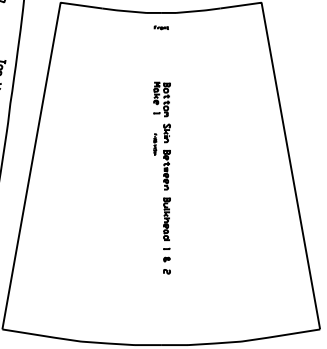
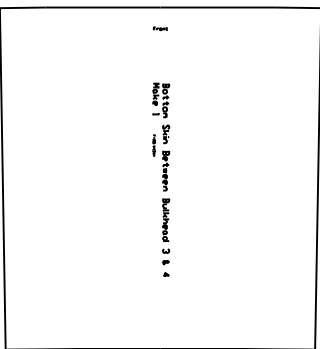
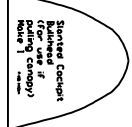
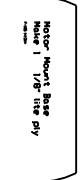
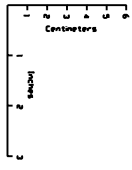
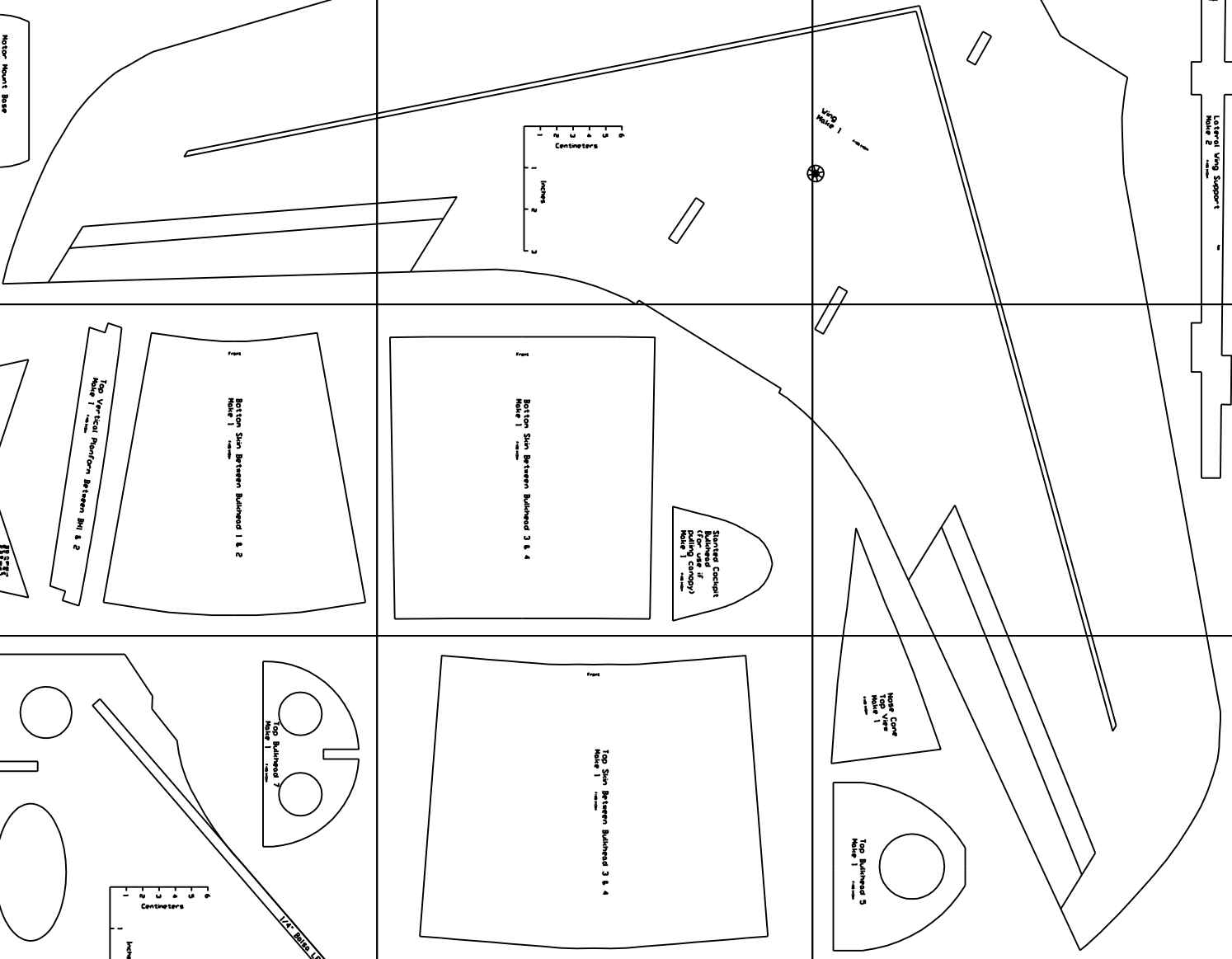
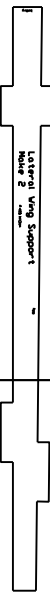
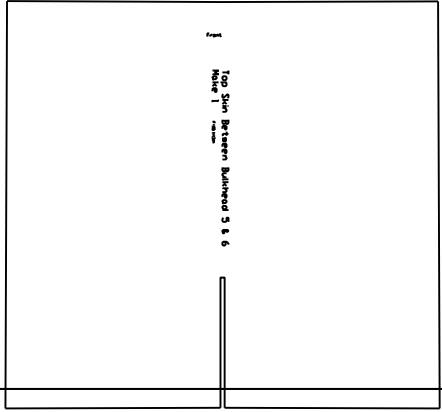
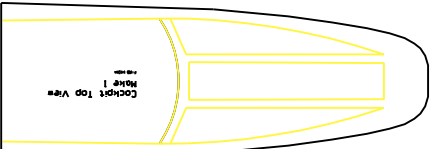
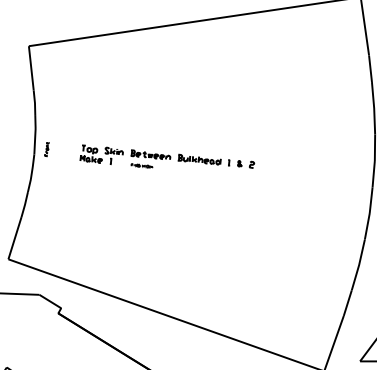
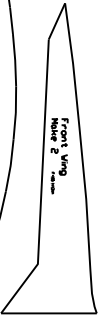
- Inlet Splitter (Note 2)
- Inlet Splitter (Note 2)
- Wing Inboard Doubler (Top & Bottom) (Note 4)
- Flare Platform (Note 1)

This sheet contains the following parts:

- Wing Inboard Cover (Top & Bottom) (Note 4)
- Wing Inboard Cover (Top & Bottom) (Note 4)
- Top Air Access (Note 2)
- Top Air Access (Note 2)

This sheet contains the following parts:

- Wing Cone (Note 1)
- Wing Cone (Note 1)
- Wing Cone (Note 1)
- Wing Cone (Note 1)



Front

Bottom Skin Between Bulkhead 6 & 8
Make 1 F-105 1/13th

Front

Bottom Skin Between Bulkhead 5 & 6
Make 1

F-105 1/13/54

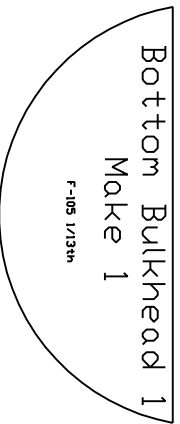
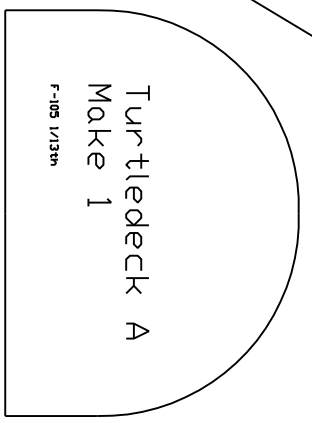
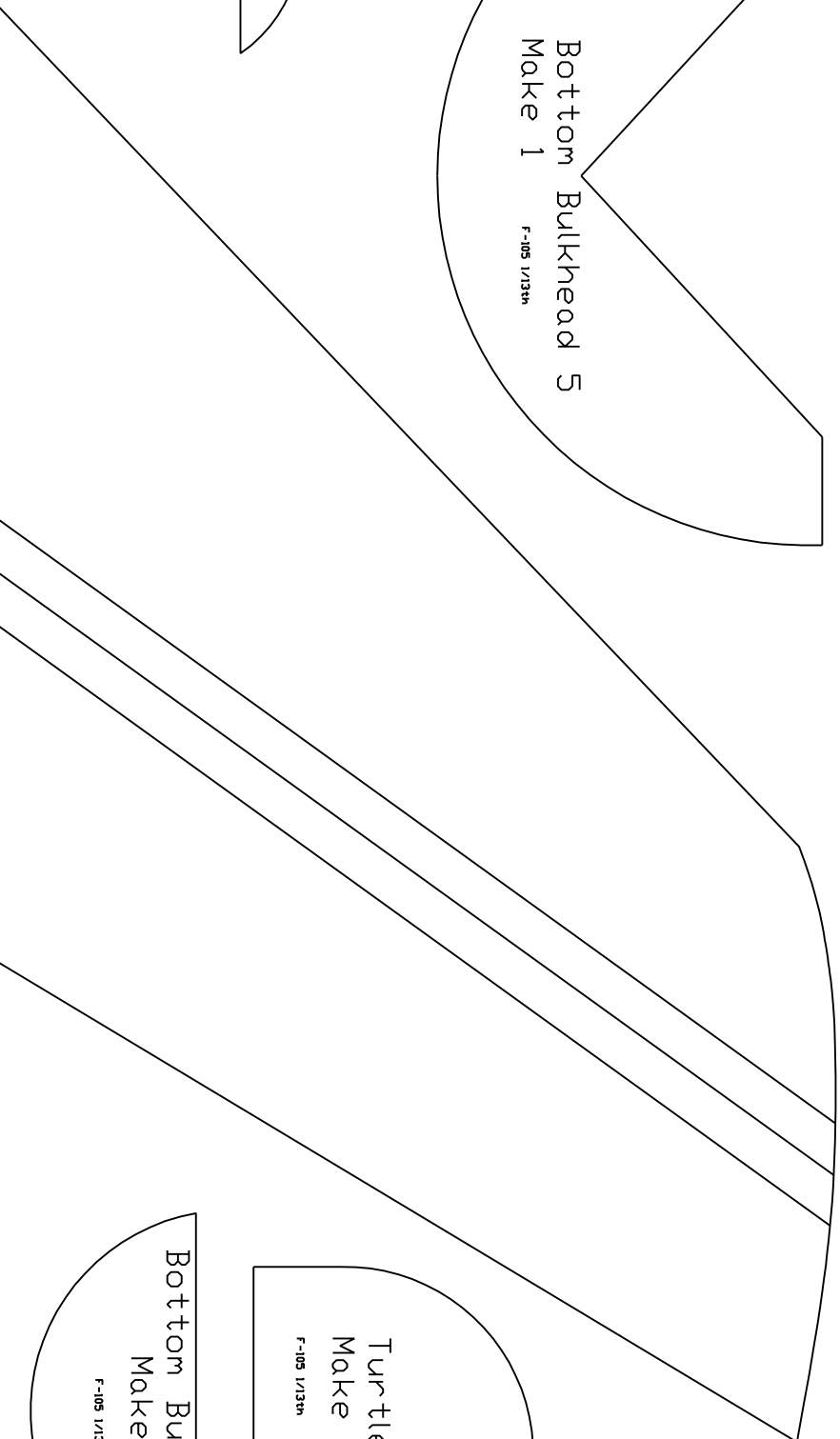
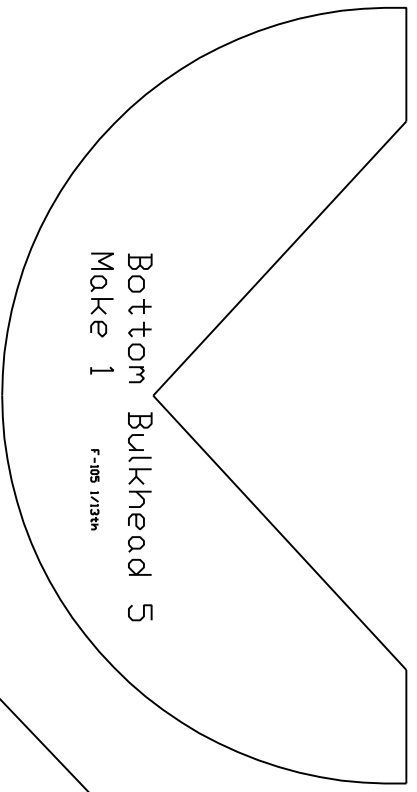
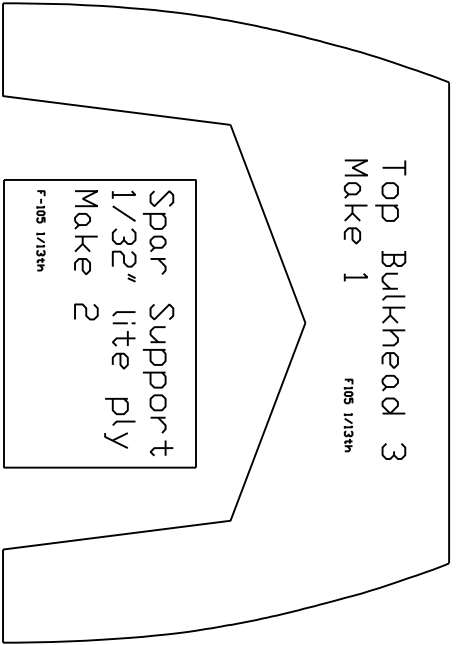
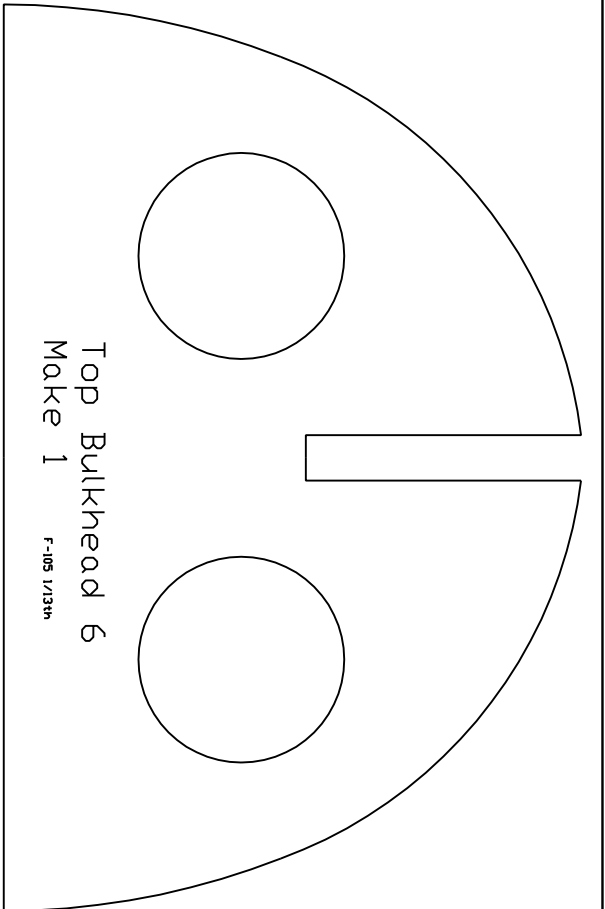
Top Bulkhead 4 Doubler
Make 1

F-105 1/13th

Front

Top Skin Between Bulkhead 2 & 3
Make 1

F-105 1/13th



Front

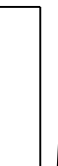
Tail Pipe
Make 1

F-105 1/13th

Front

Top Skin Between Bulkhead 4 & 5
Make 1

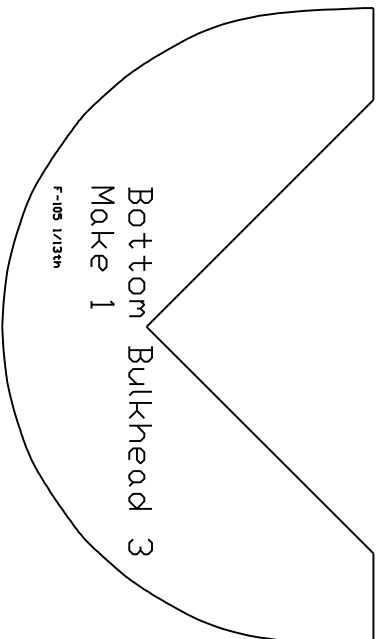
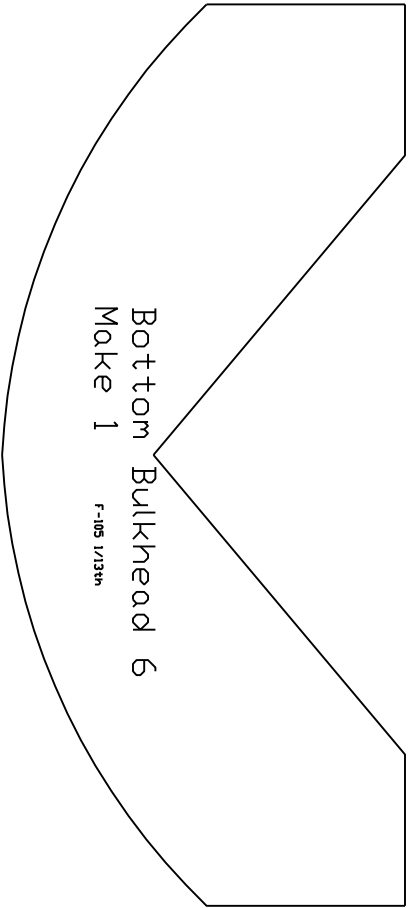
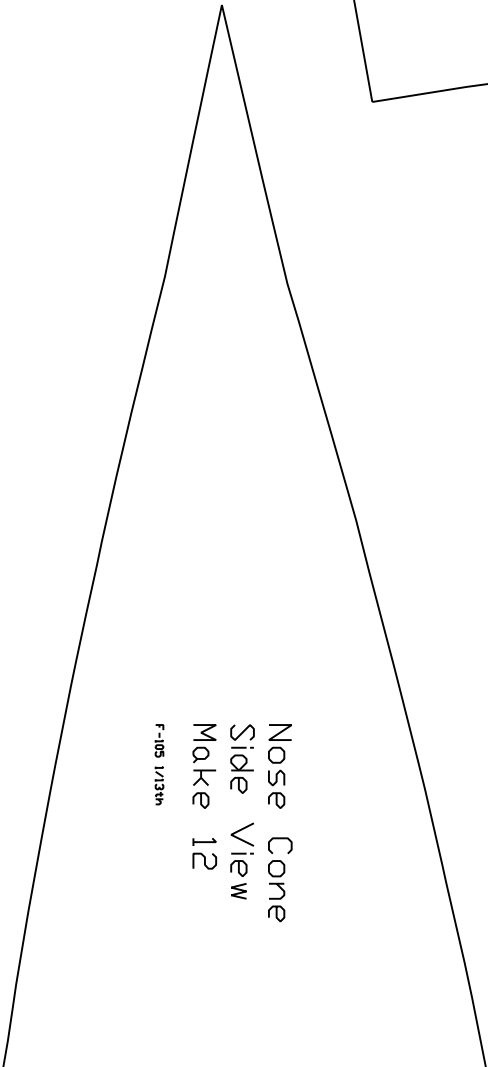
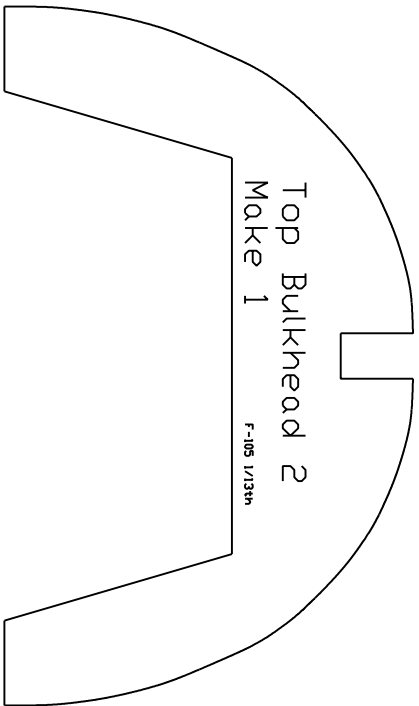
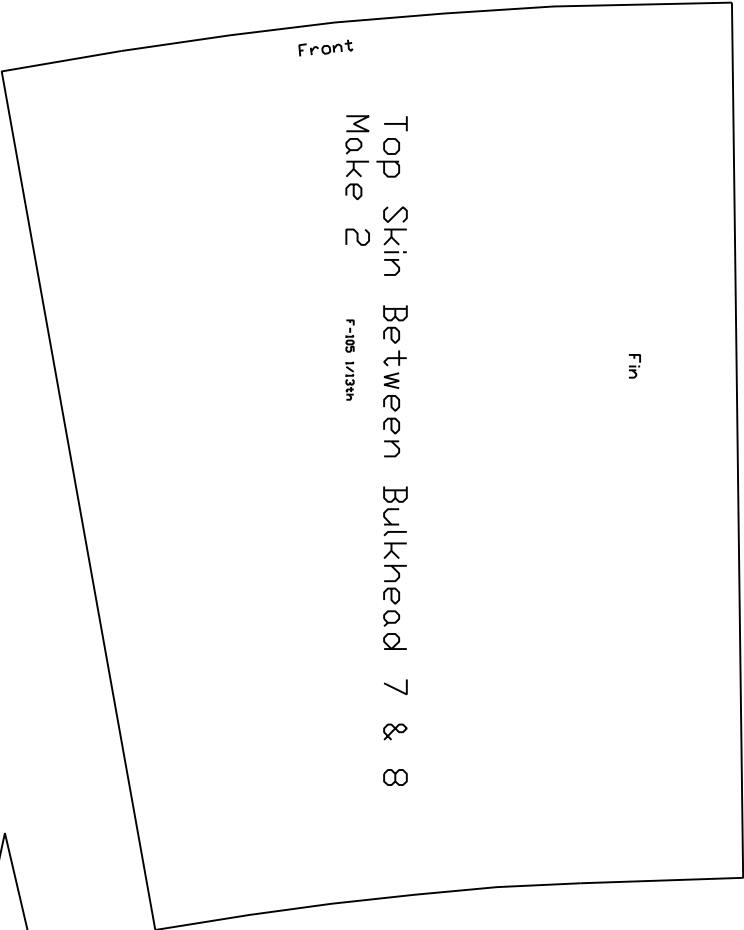
F-105 1/13th



Front

Bottom Skin Between Bulkhead 2 & 3
Make 1

F-105 1/1344



Stabilizer
Make 1

F-105 1/13th

Top Bulkhead 8
Make 1

F-105 1/13th

Bottom Bulkhead 8
Make 1

F-105 1/13th

Bottom Bulkhead 4
Make 1

F-105 1/13th

Motor Mount
Plate
Make 1
1/8" lite ply

F-105 1/13th

Front

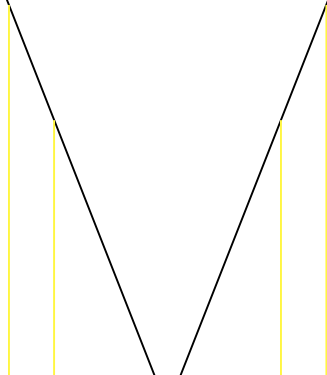
Turtleneck Skin Between Bulkhead A & B
Make 1

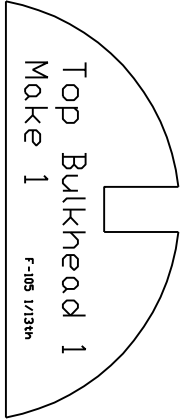
F-105 1/13th

Dorsal Fin
Make 1

F-105 1/13th

Front





Center Wing Support
Make 2 F-105 1/13th

Top



Aft Fuse Platform
Make 1 F-105 1/13th



Front

Stabilizer Support
Make 2

F-105 1/13th

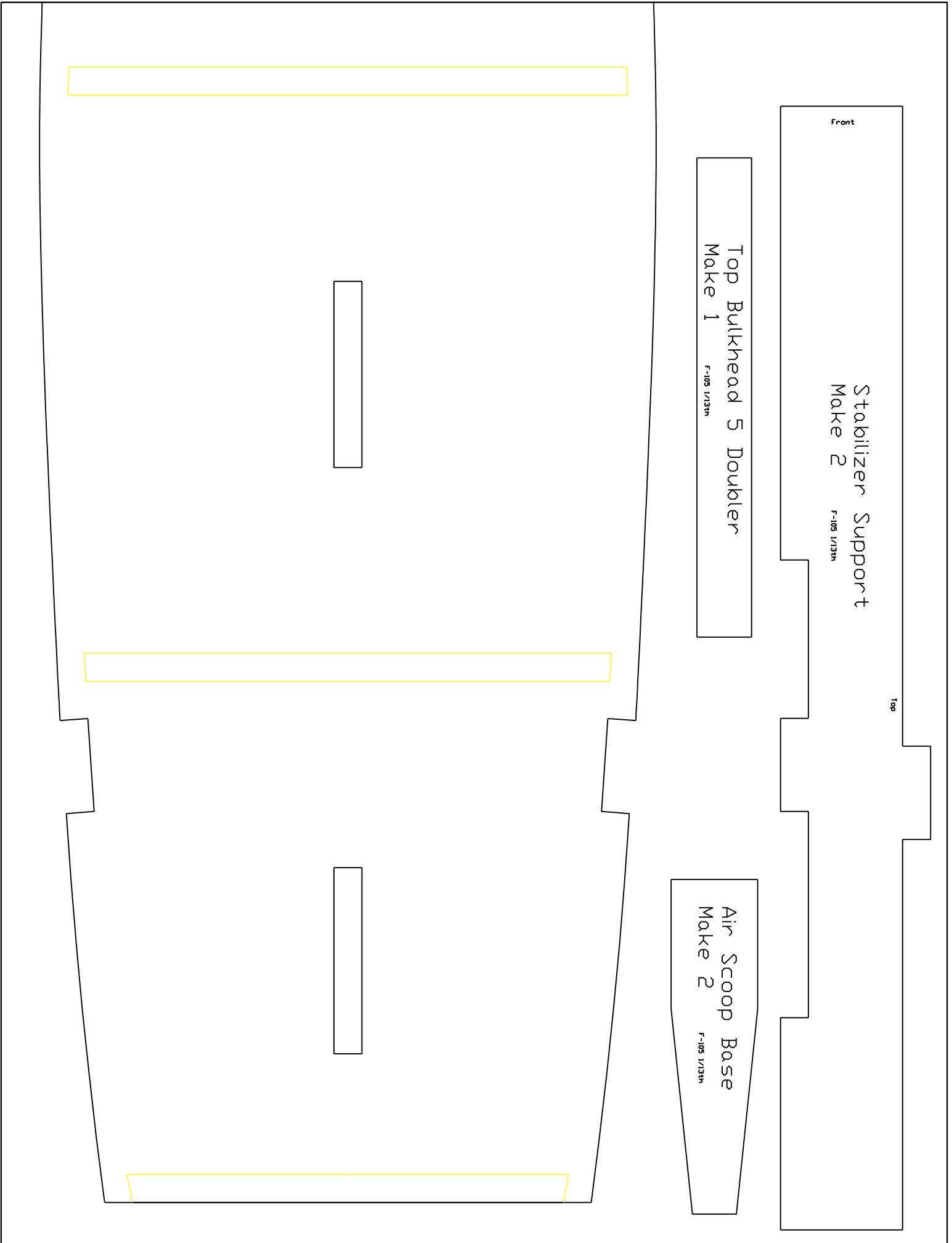
Top

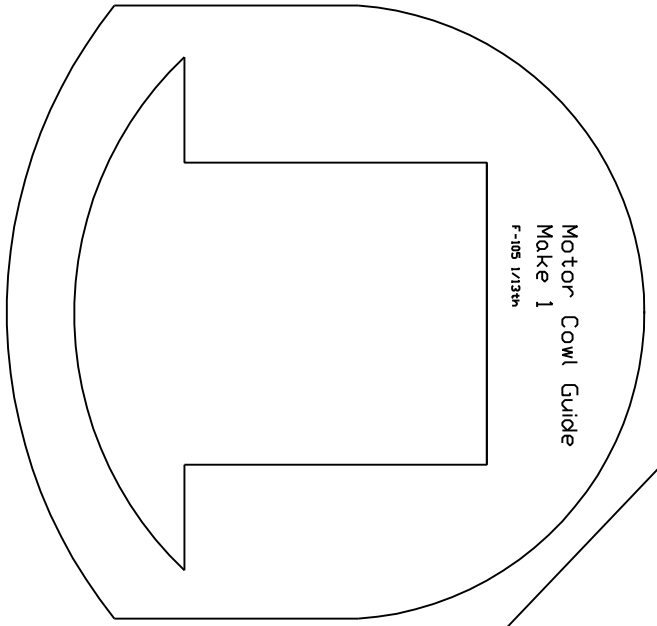
Top Bulkhead 5 Doubler
Make 1

F-105 1/13th

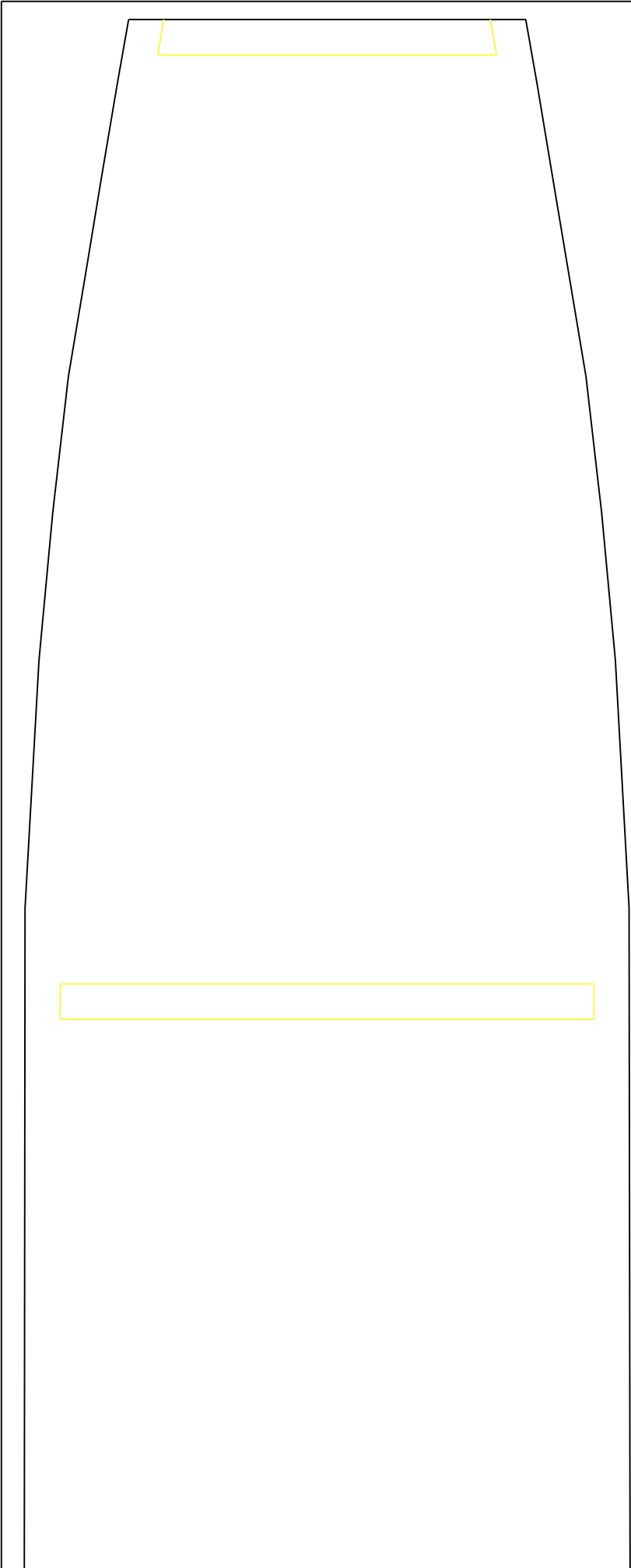
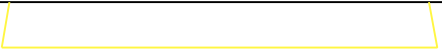
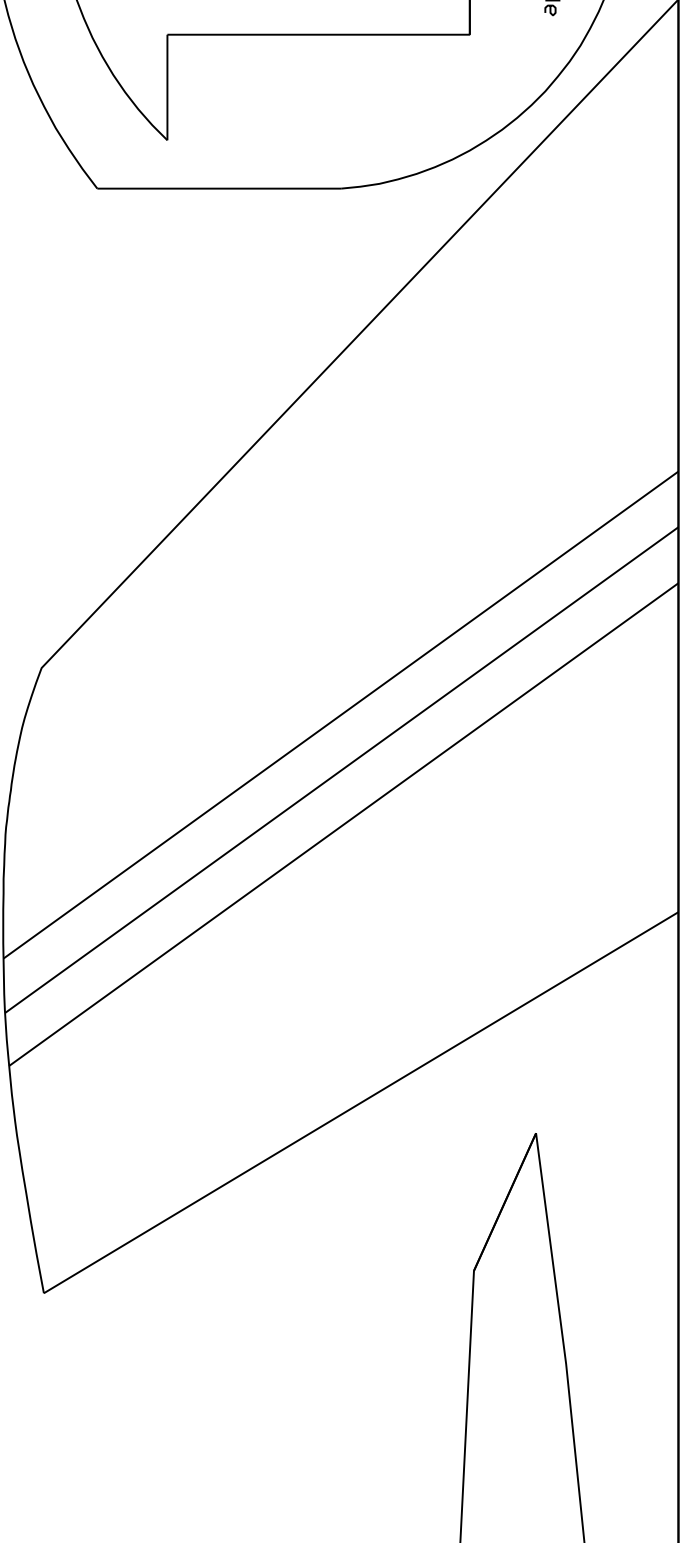
Air Scoop Base
Make 2

F-105 1/13th





Motor Cowl Guide
Make 1
F-105 1/13th



Wing Intake Doubler (Top & Bottom)
Make 4 F-105 1/13th

Engine Access
Make 6 F-105 1/13th

Inlet Splitter
Make 2
3mm Depron

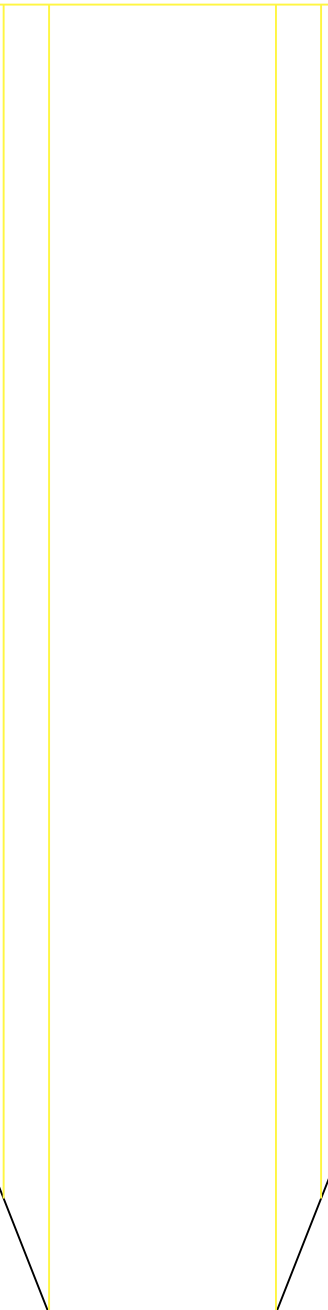
F-105 1/13th

Fuse Platform
Make 1 F-105 1/13th



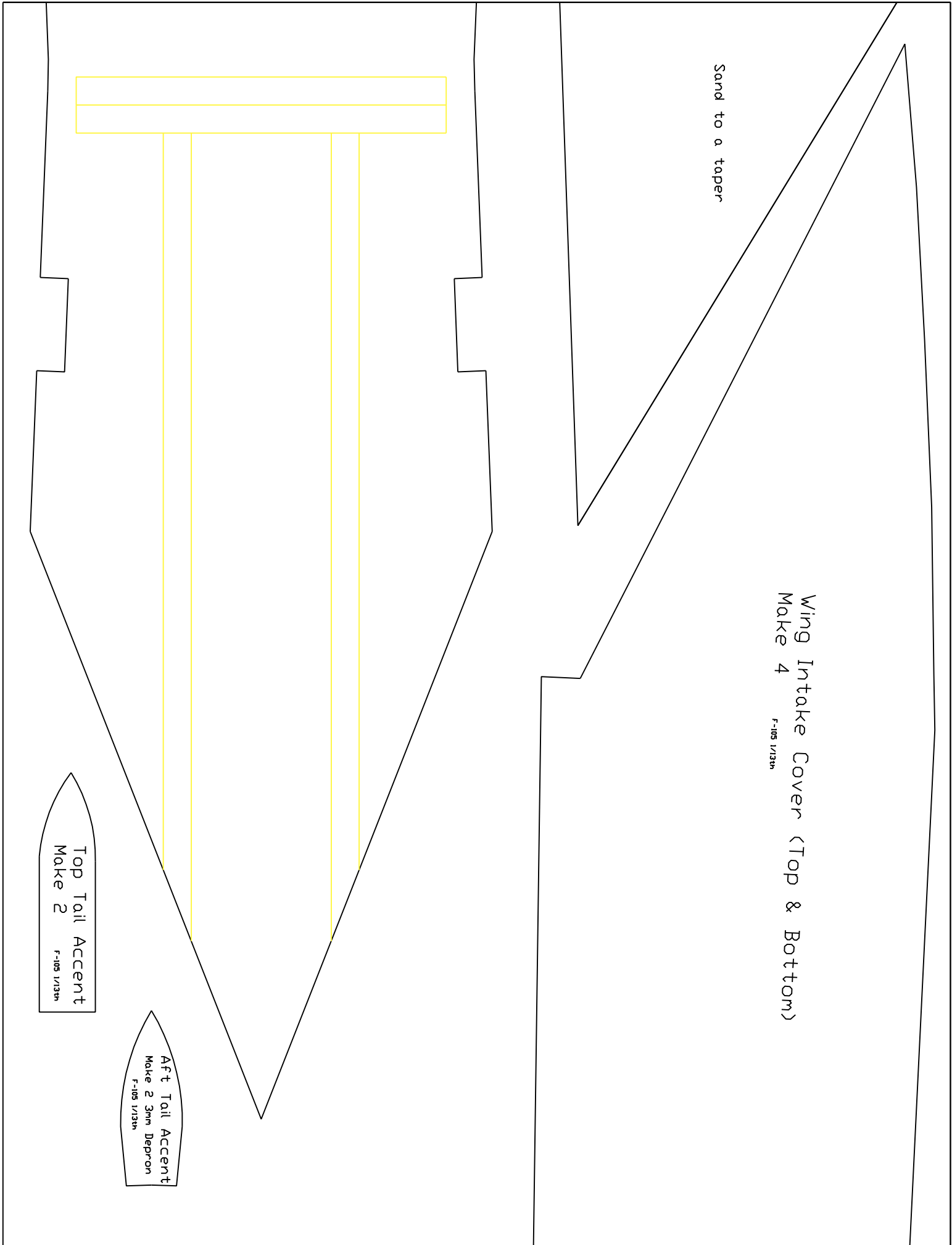
Wing Intake Cover (Top & Bottom)
Make 4
F-105 1/13th

Sand to a taper



Top Tail Accent
Make 2
F-105 1/13th

Aft Tail Accent
Make 2 3mm Depron
F-105 1/13th



Sand to a taper

Motor Cone
Make 1
F-105 1/13th

Top Bulkhead 4
Make 1

F-105 1/13th

Front Wing
Make 2

F-105 1/13th

Top Skin Between Bulkhead 1 & 2
Make 1

F-105 1/13th

Front

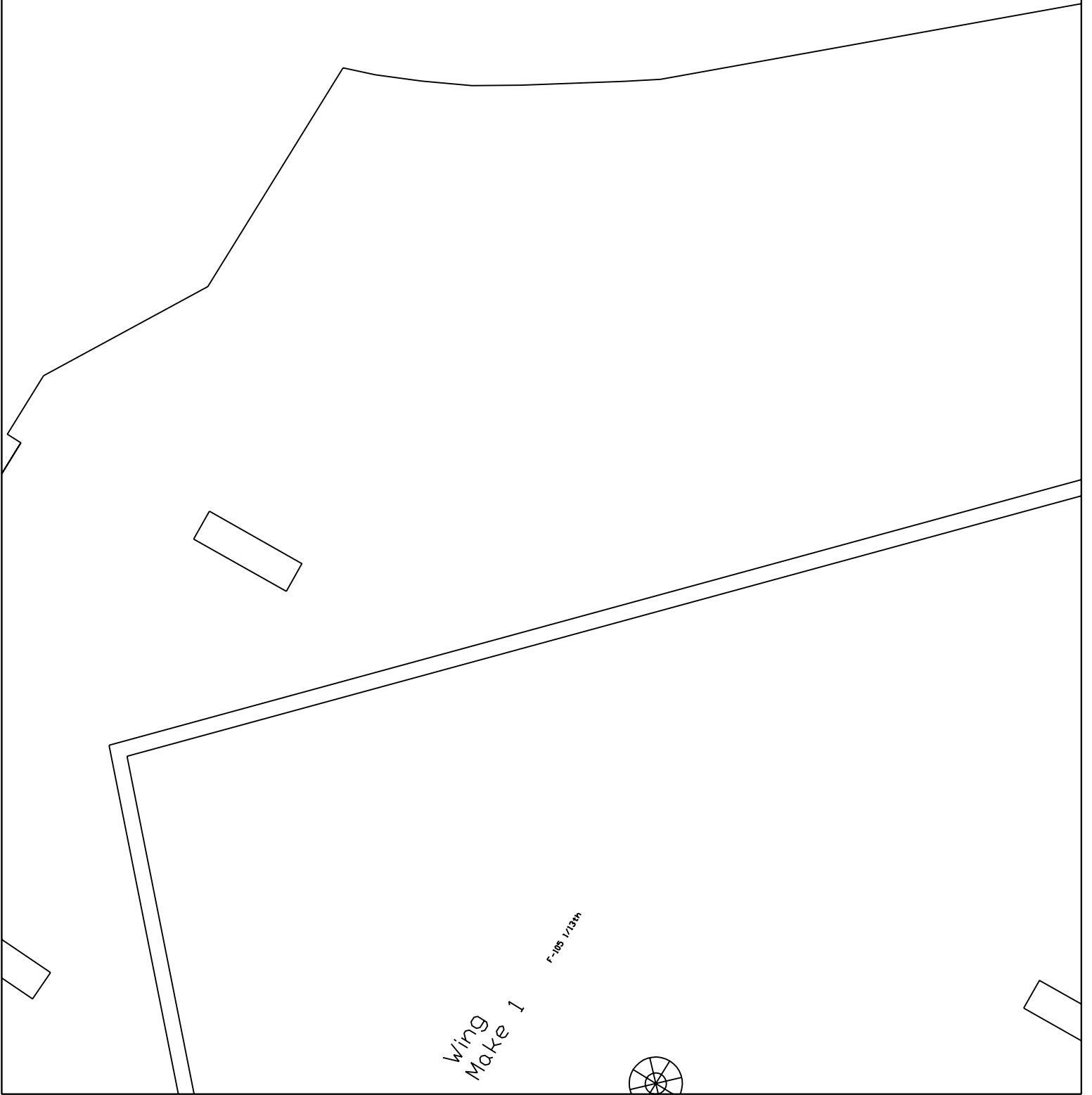


Front

Lateral Wing Support Make 2

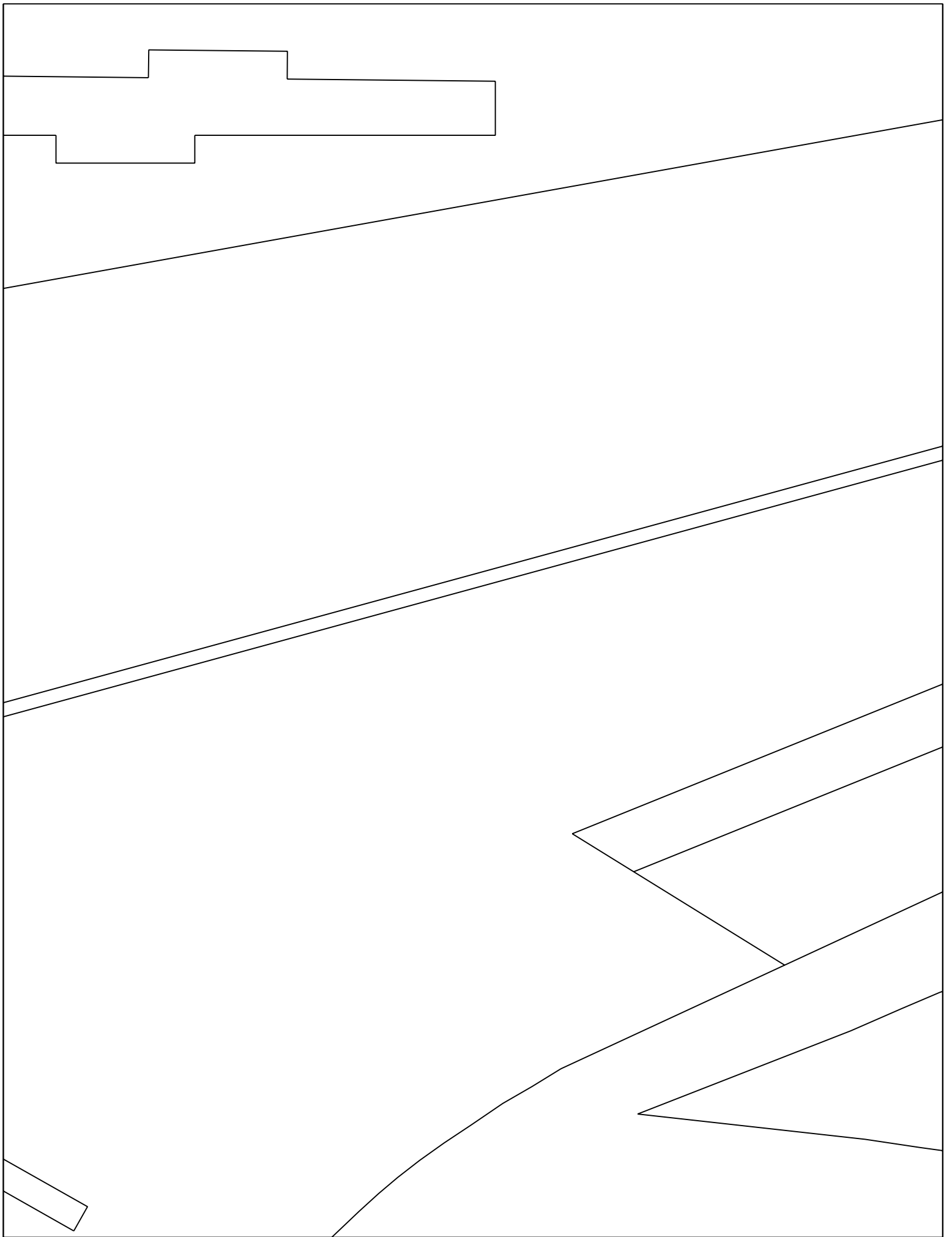
Top

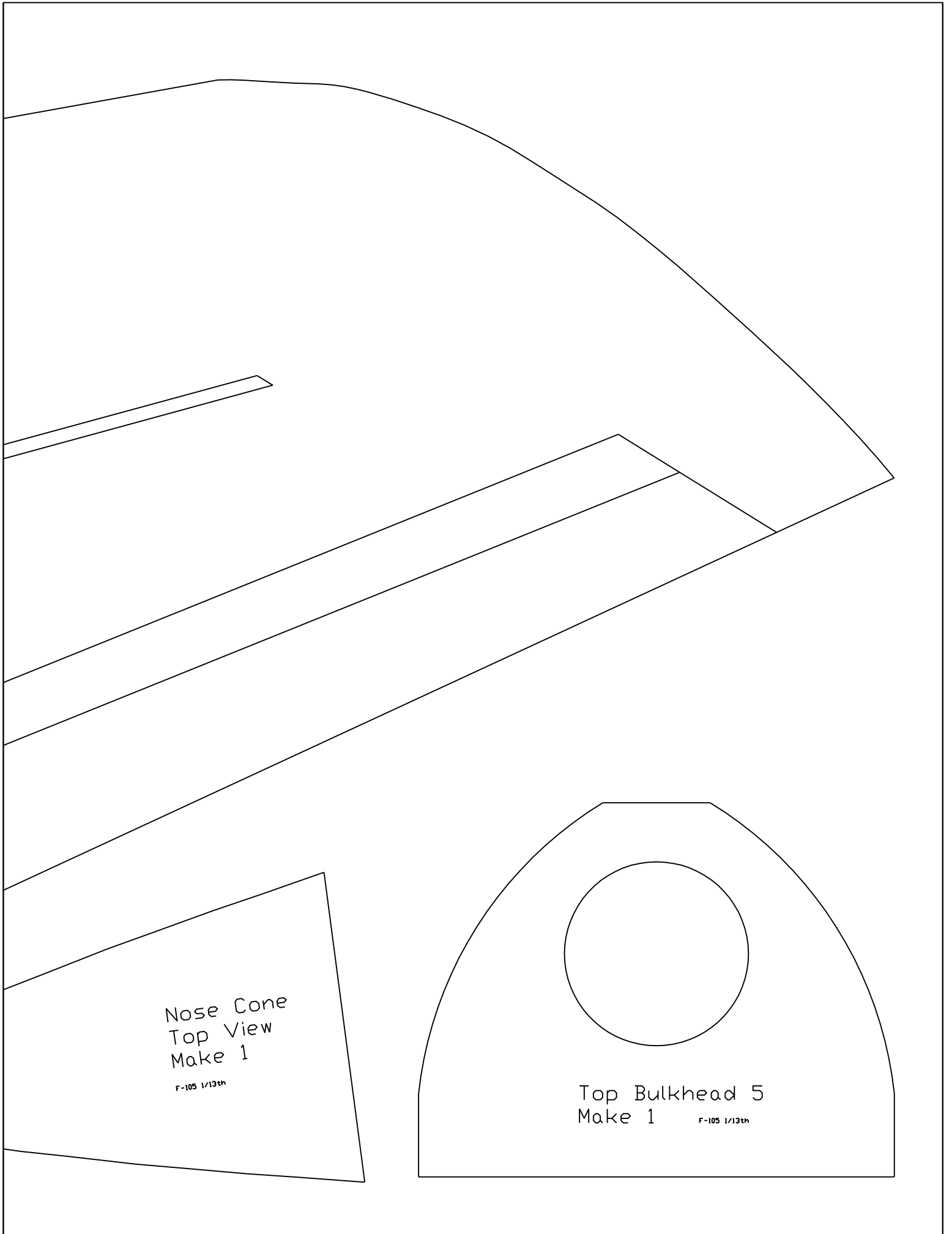
F-105 1/13th



Wing
Make 1

F-105 1/13th





Nose Cone
Top View
Make 1

F-105 1/13th

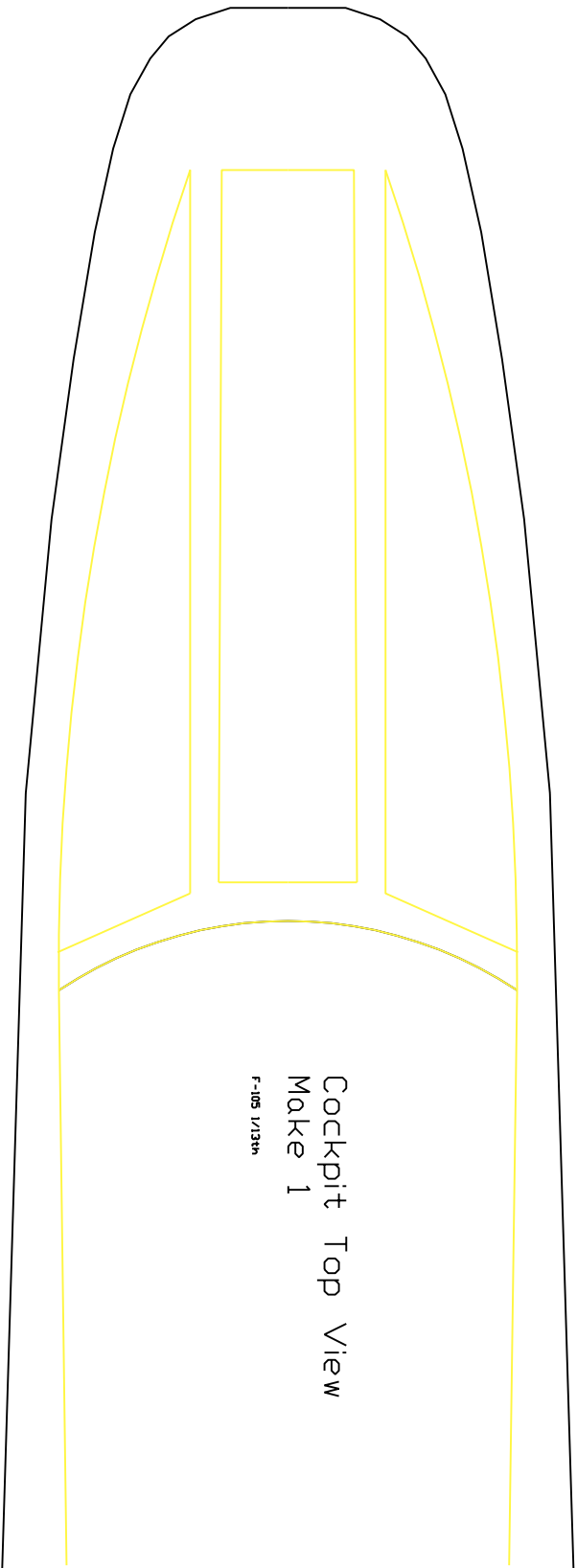
Top Bulkhead 5
Make 1

F-105 1/13th

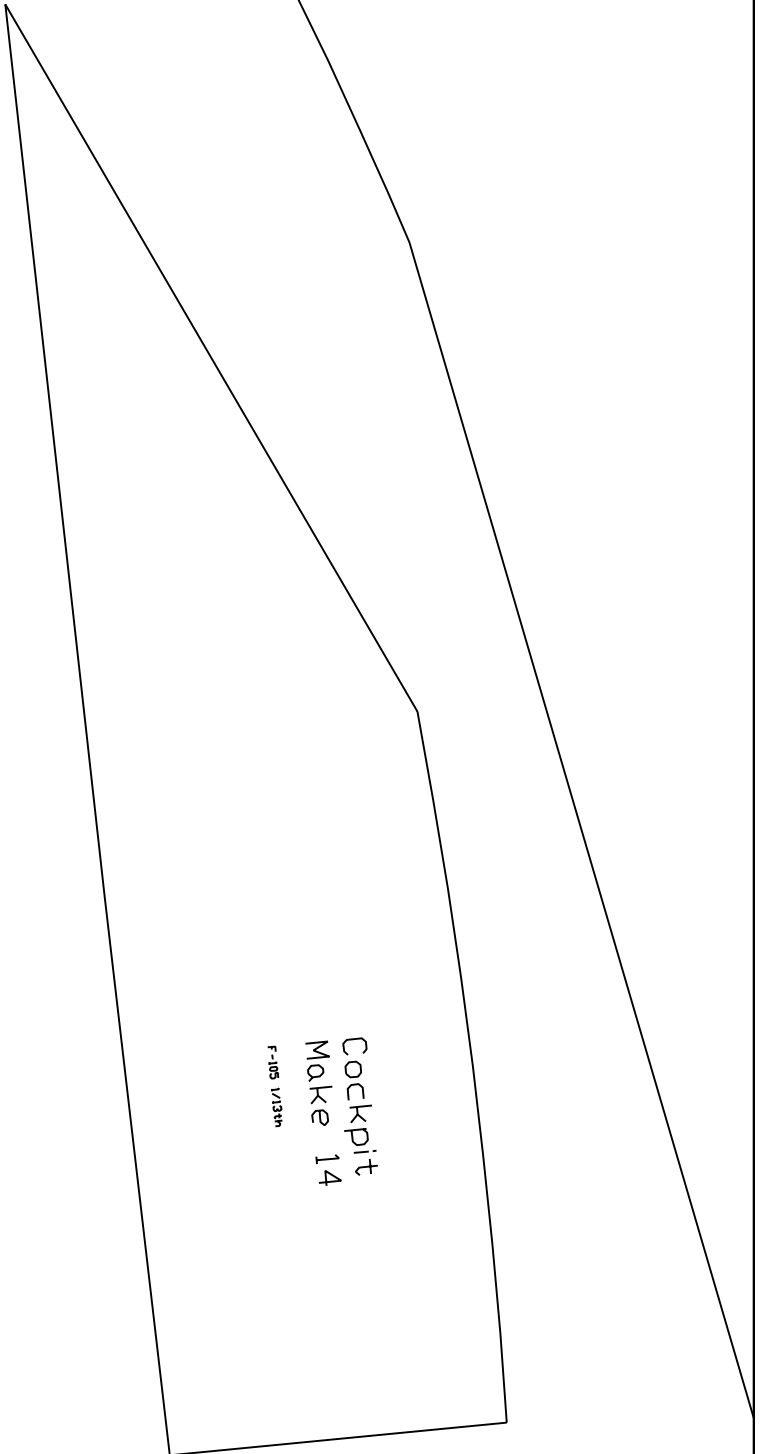
Bottom Skin Between Bulkhead 4 & 5

Make 1

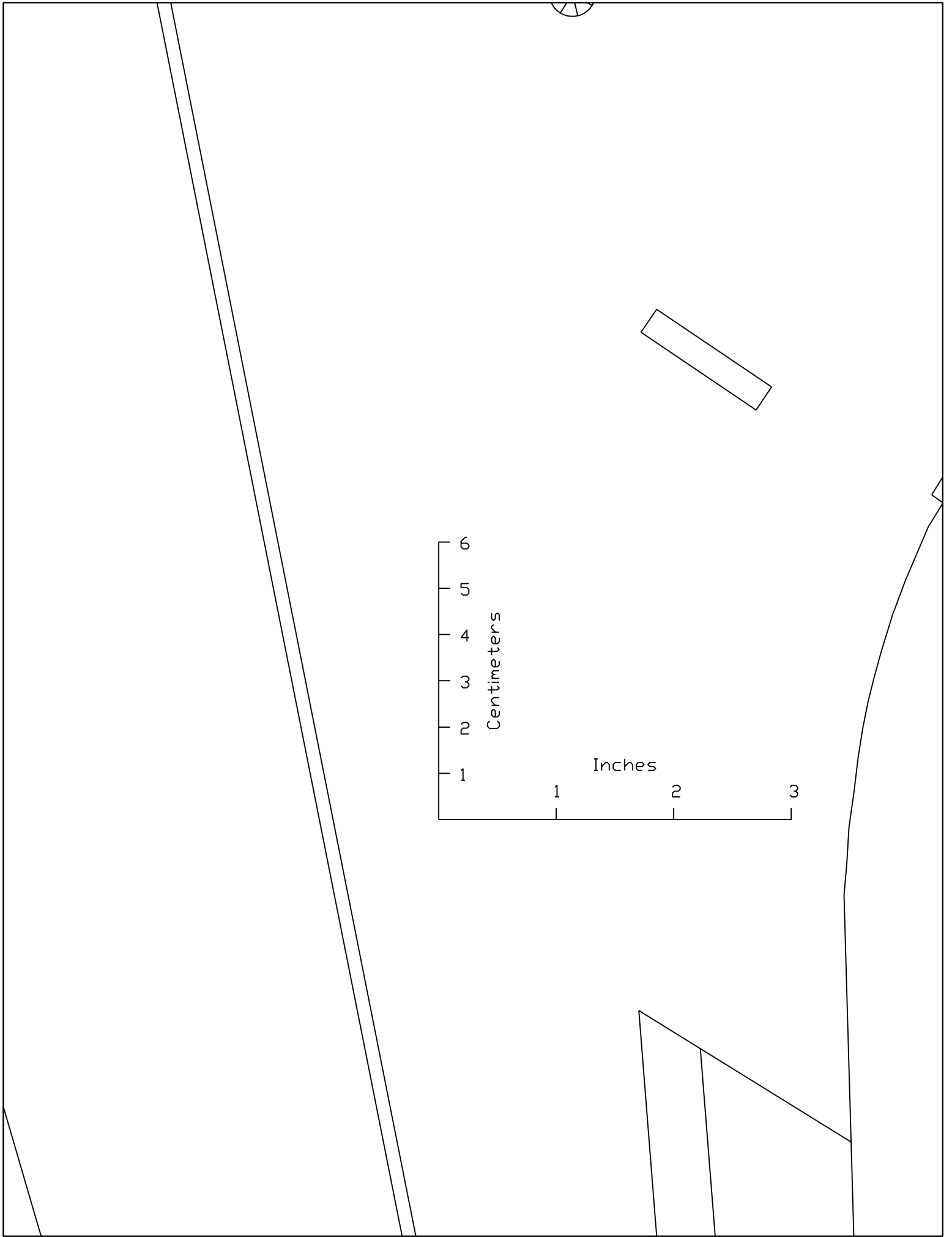
F-105 1/13th

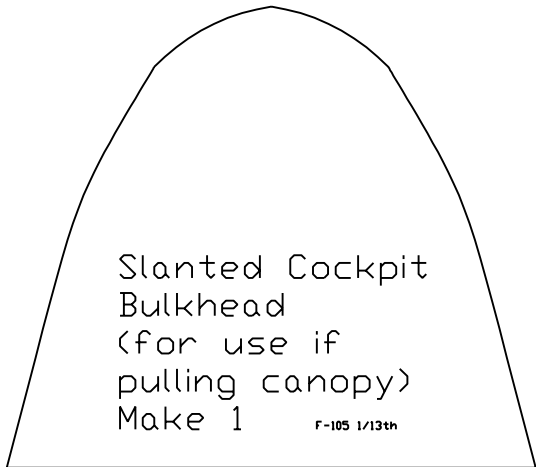
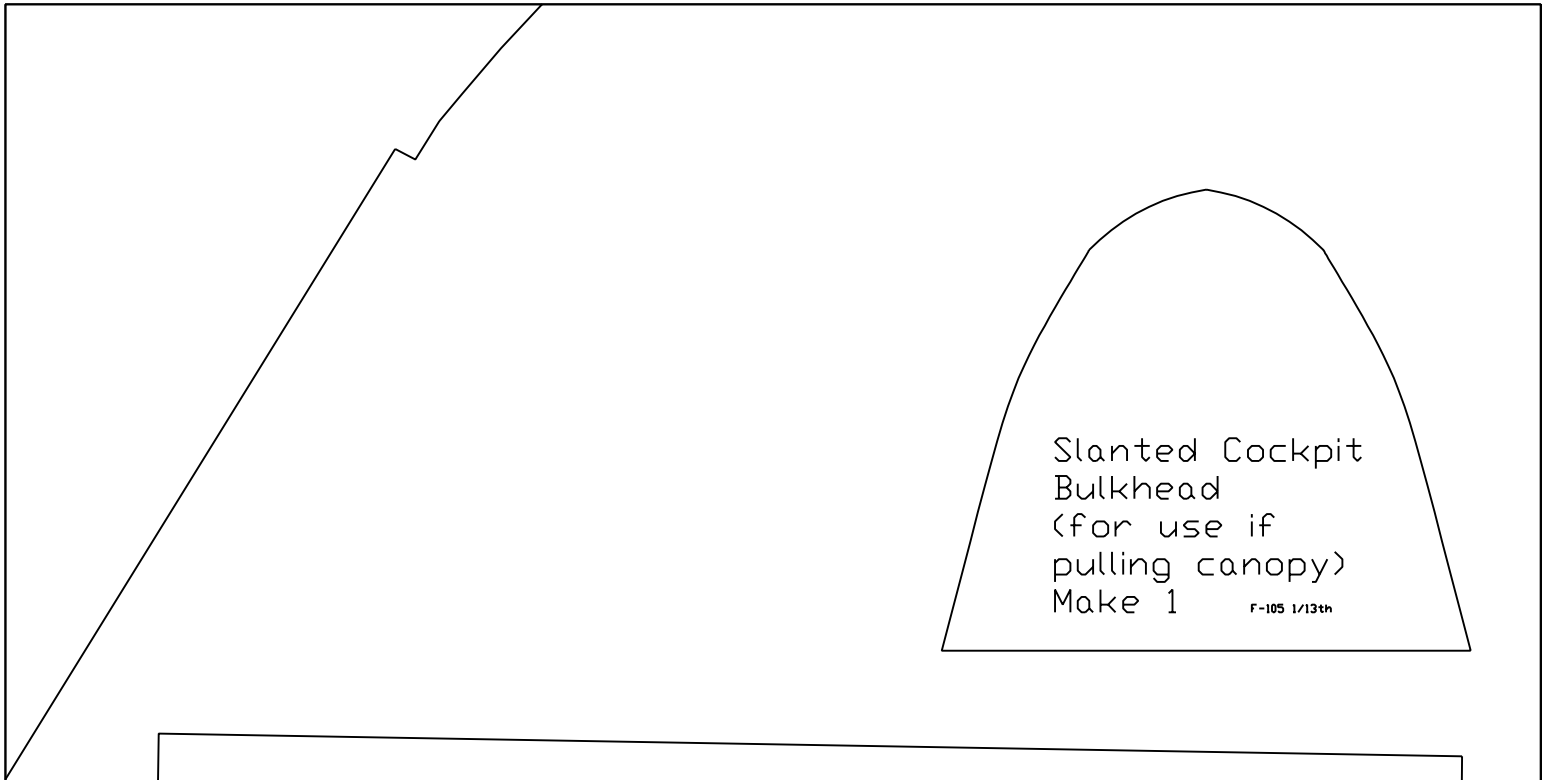


Cockpit Top View
Make 1
F-105 1/13th



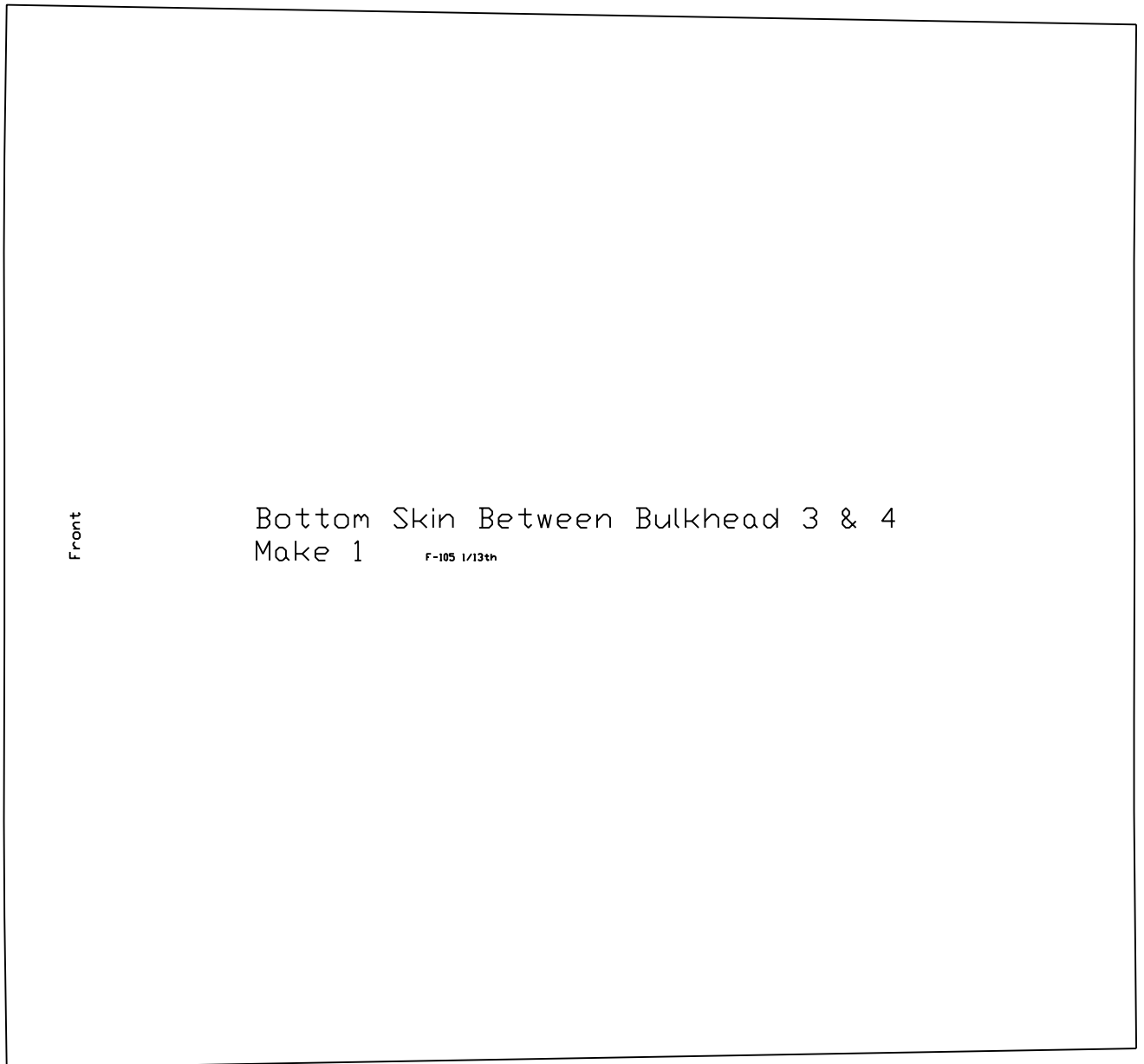
Cockpit
Make 14
F-105 1/13th





Slanted Cockpit
Bulkhead
(for use if
pulling canopy)
Make 1

F-105 1/13th



Front

Bottom Skin Between Bulkhead 3 & 4
Make 1

F-105 1/13th

Front

Top Skin Between Bulkhead 3 & 4
Make 1

F-105 1/13th

Front

Fin

Top Skin Between Bulkhead 6 & 7
Make 2

F-105 1/13th

Front

Bottom Bulkhead 2
Make 1

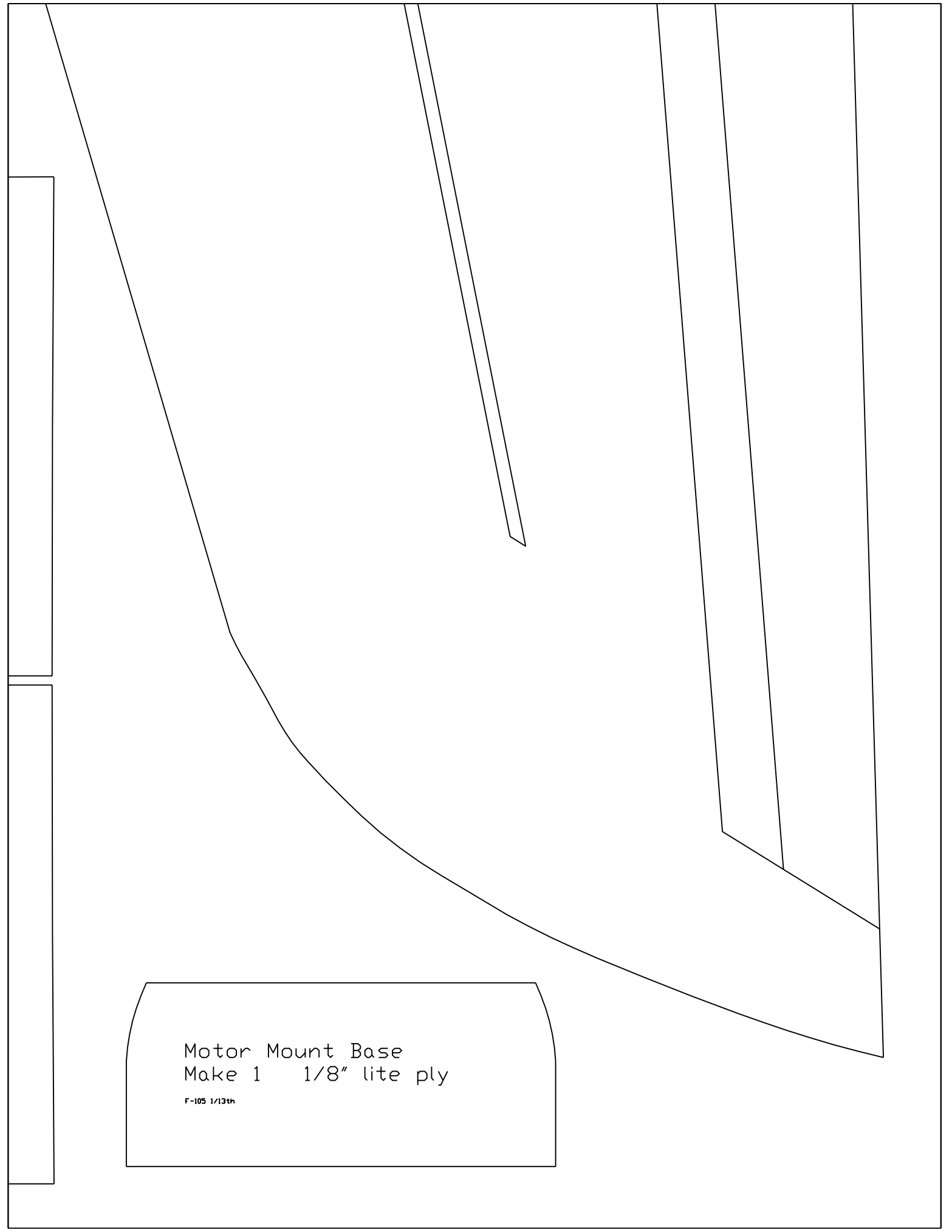
F-105 1/13th

Front

Top Skin Between Bulkhead 5 & 6
Make 1

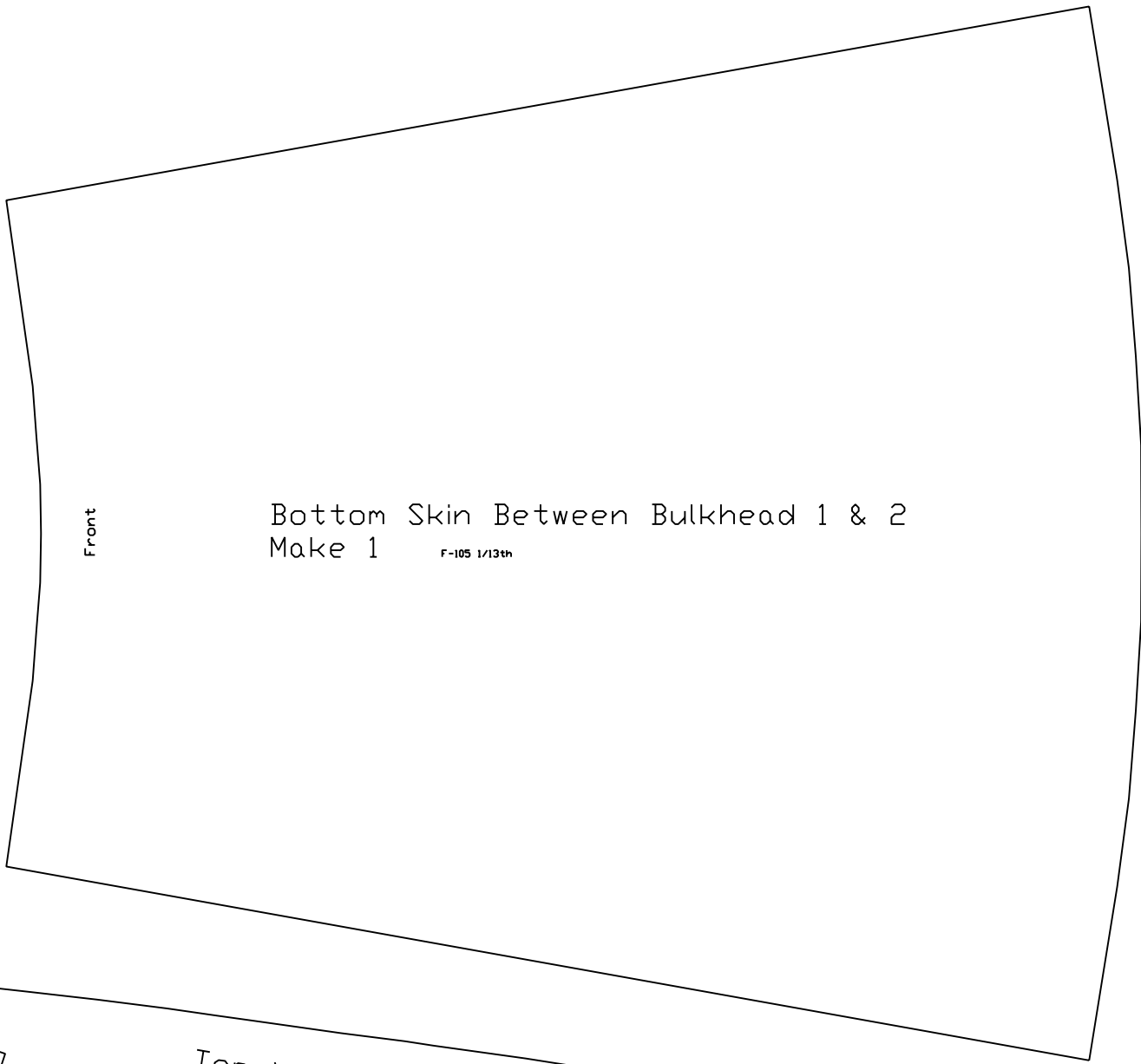
F-105 1/13th





Motor Mount Base
Make 1 1/8" lite ply

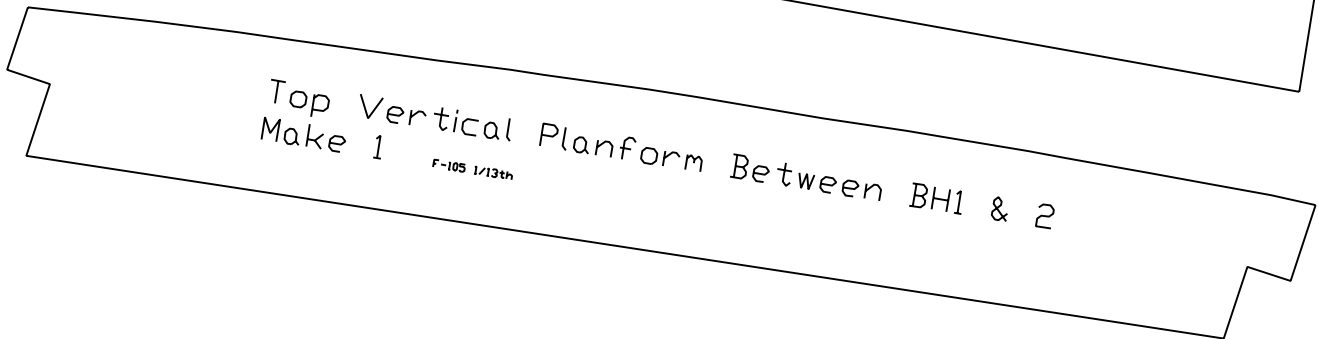
F-105 1/13th



Front

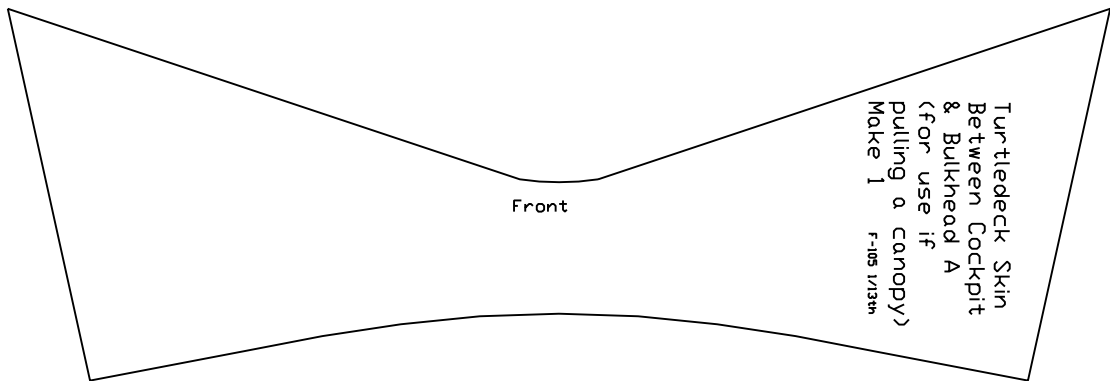
Bottom Skin Between Bulkhead 1 & 2
Make 1

F-105 1/13th



Top Vertical Platform Between BH1 & 2
Make 1

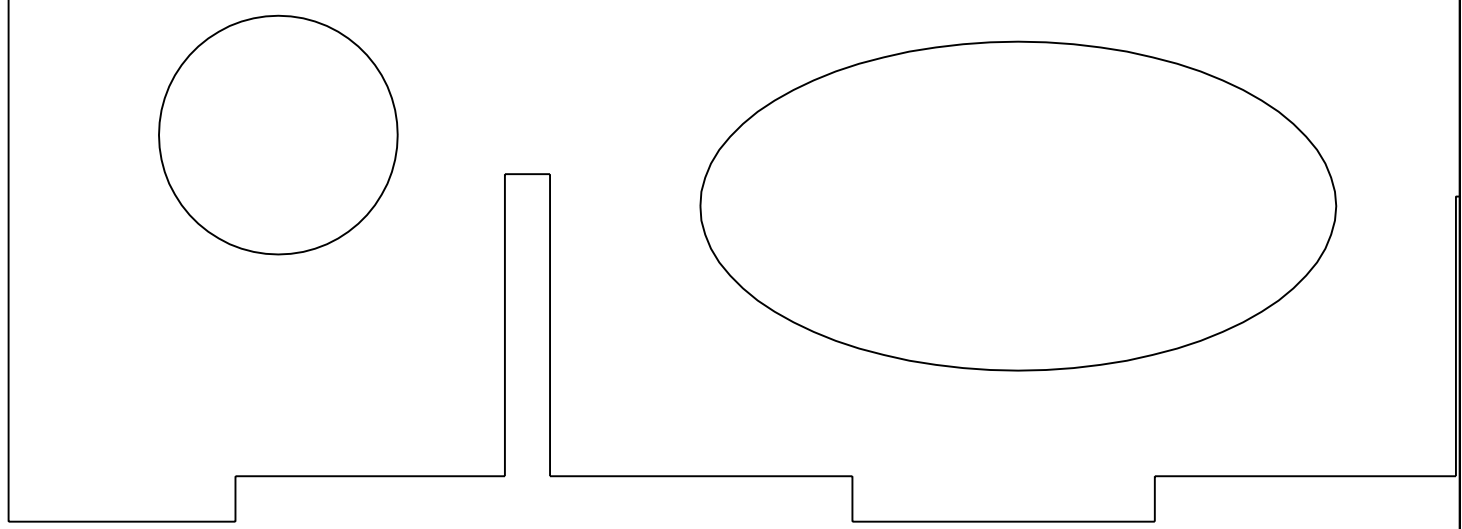
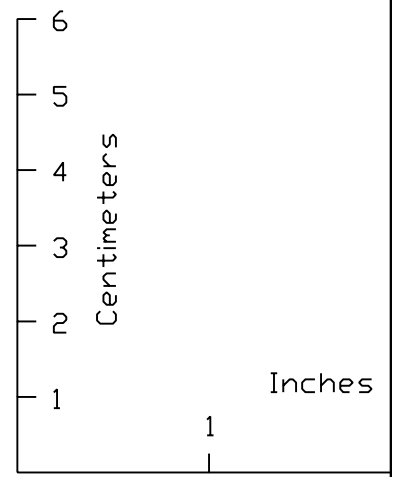
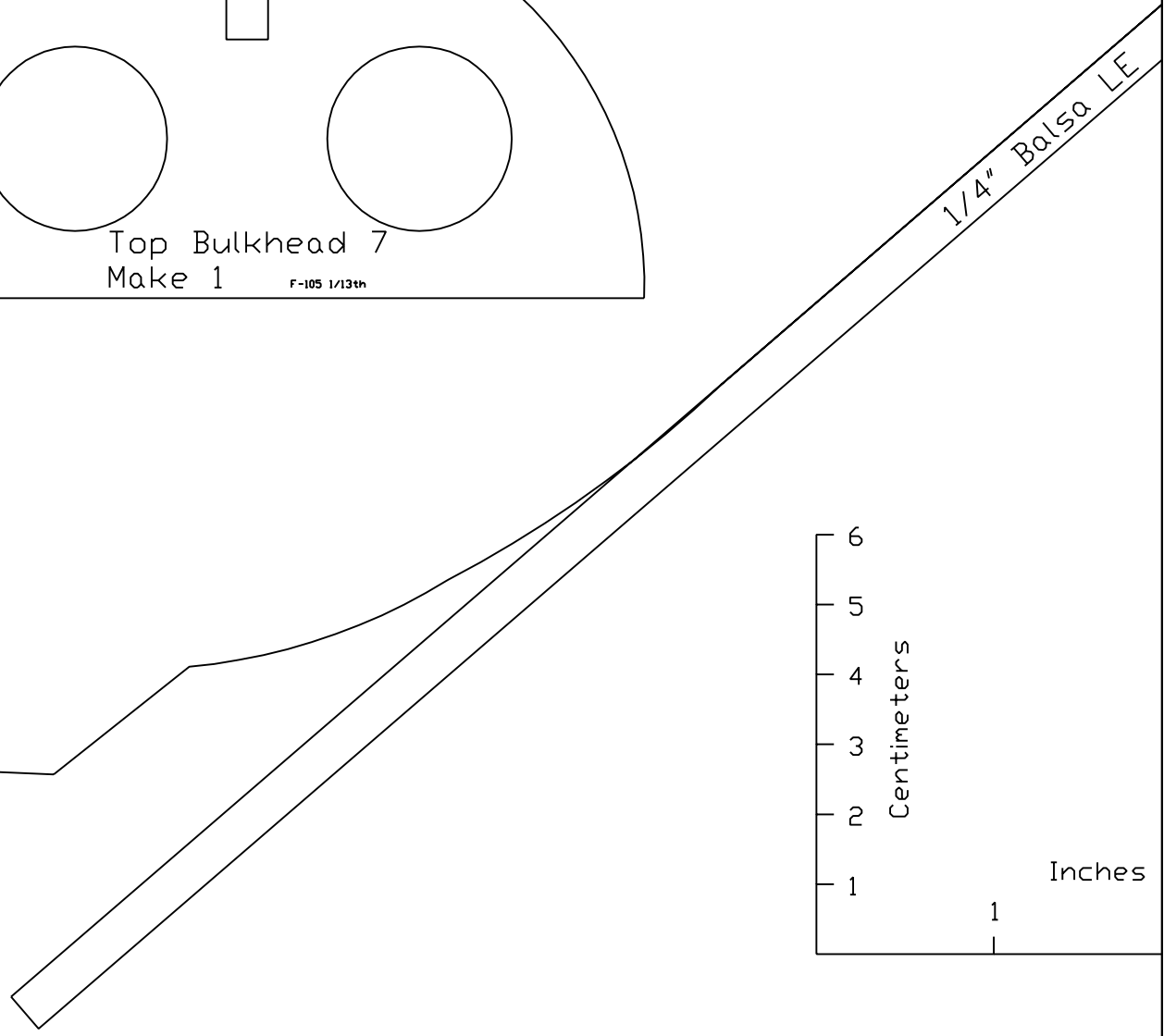
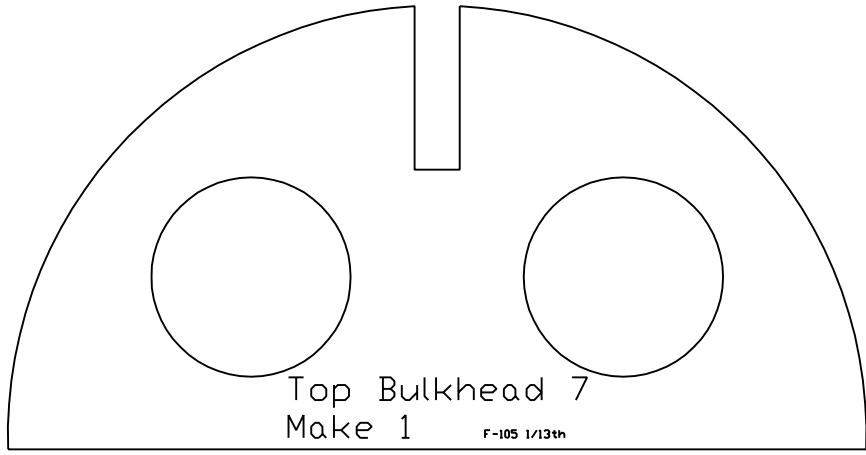
F-105 1/13th



Front

Turtledeck Skin
Between Cockpit
& Bulkhead A
(for use if
pulling a canopy)
Make 1

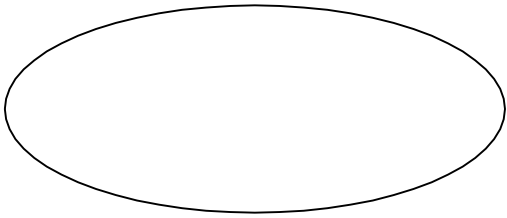
F-105 1/13th



Fin
Make 1

F-105 1/13th

2 3



Aft Turtleneck Skin
Make 1

F-105 1/13th

Front

